



GMT MONTHLY MEMBERSHIP PROGRESS REPORT

Results as of: 3/31/2017

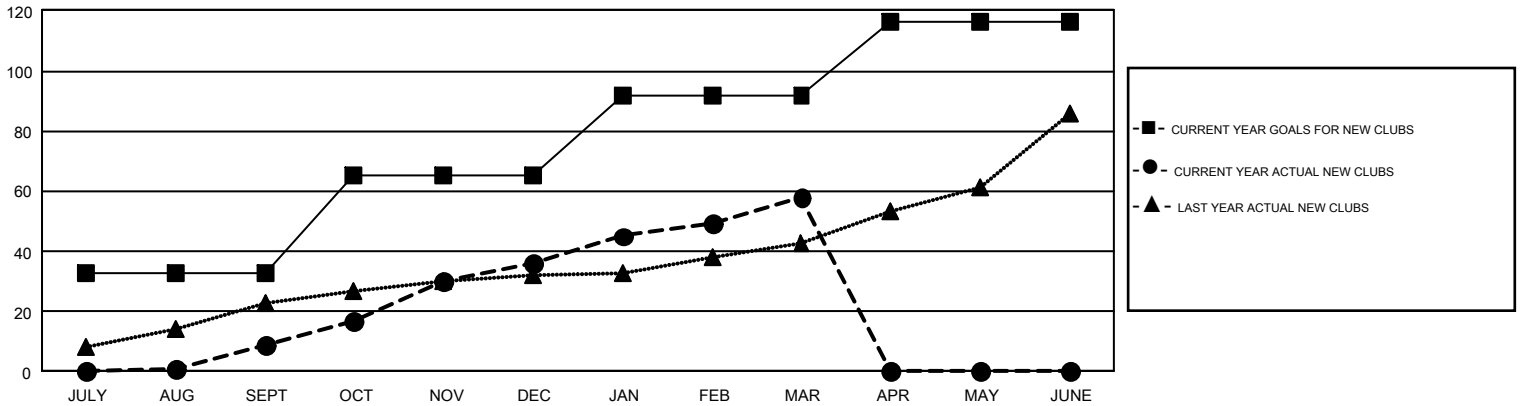
GMT Constitutional Area 6-Africa

REPORT DOES NOT INCLUDE CLUBS IN UNDISTRICTED AREAS.

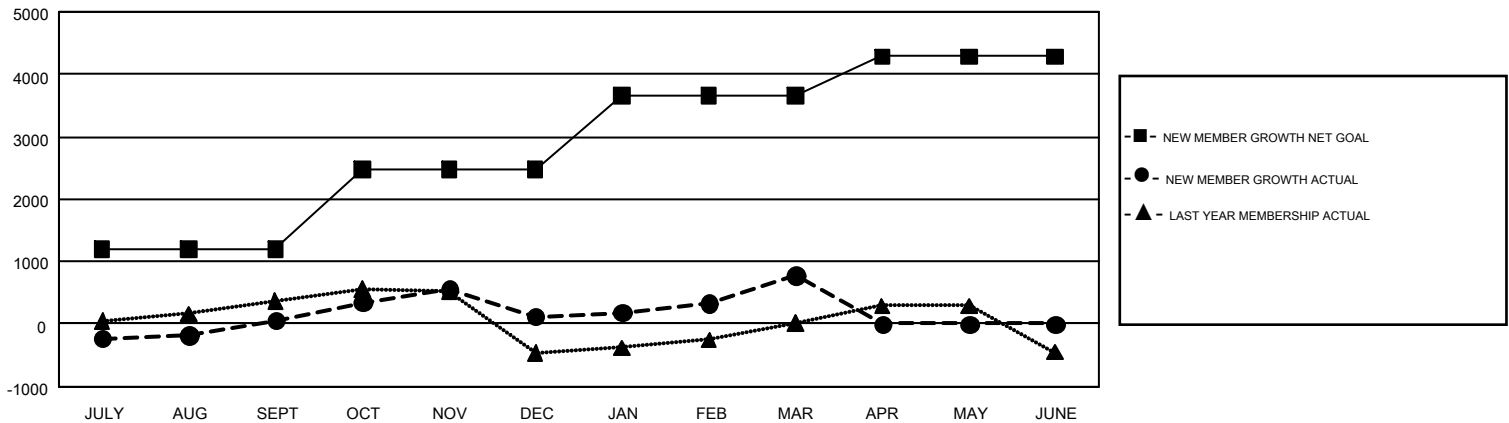
Clubs			
RESULTS FOR 2016-2017			
QUARTER	NEW CLUB GOAL	NEW CLUBS	DROPPED CLUBS
JULY/AUG/SEPT	33	9	7
OCT/NOV/DEC	32	27	18
JAN/FEB/MAR	27	22	30
APR/MAY/JUNE	24	0	0

Members			
RESULTS FOR 2016-2017			
QUARTER	NEW MEMBER GROWTH NET GOAL (not reinstated or transfers)	NEW MEMBER GROWTH ACTUAL (not reinstated or transfers)	DROPPED MEMBERS ACTUAL (including transfers)
JULY/AUG/SEPT	1,193	947	890
OCT/NOV/DEC	1,277	1,737	1,675
JAN/FEB/MAR	1,186	1,960	1,292
APR/MAY/JUNE	626	0	0

GOALS AND ACTUAL NEW CLUBS CUMULATIVE



GOALS AND ACTUAL MEMBERS CUMULATIVE



DROPPED CLUBS: 55	788 CLUBS OF 1,333 ADDED 1 OR MORE NEW MEMBERS	GENDER DISTRIBUTION MALE 18,386 (62.57%) FEMALE 11,000 (37.43%)
DROPPED MEMBERS DECEASED 107 CLUB CANCELLED 1,024 OTHER 2,725 <hr/> TOTAL 3,856	CLICK HERE FOR CUMULATIVE MEMBERSHIP DATA	TOTAL FAMILY UNIT MEMBERS 3,370 FAMILY MEMBERS PAYING HALF DUES 1,814